

Daikin RX20JV1B

Specifications

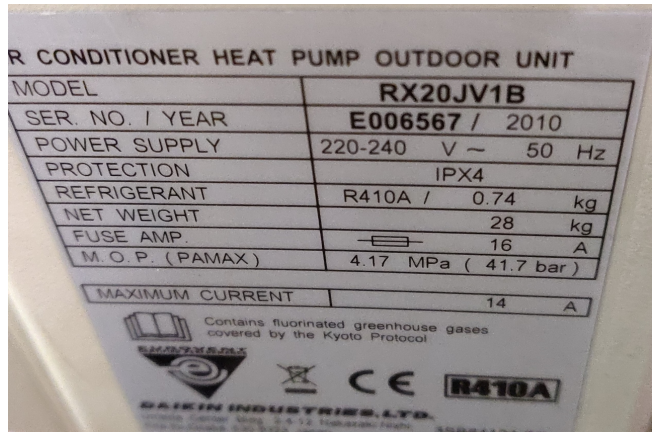
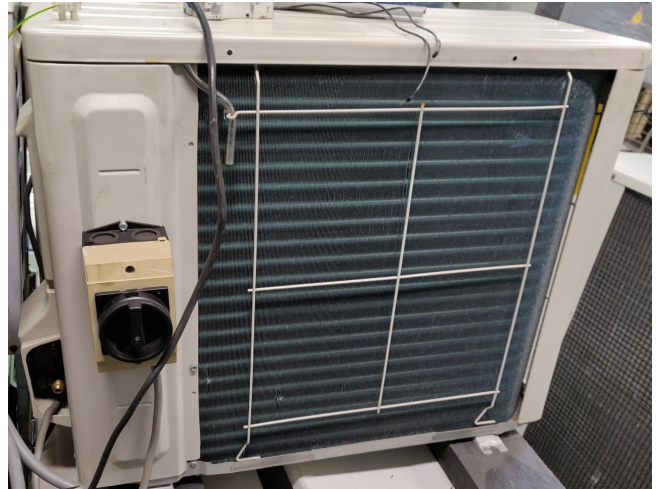
Marka	Daikin
Typ	RX20JV1B
Typ produktu	Air Cooled Chiller (split-unit)
Ogólna wydajność w kW	3,5
Ogólna wydajność w	0,99
Tonaż	
Czynnik chłodzący	Freon
Typ czynnika chłodzącego	R410A
Waga kg.	28 kg
Rozmiary	658x275x550 mm (LxWxH)
Compressor(s) type & model	1YC23AEXDA
Number of fans	1
Uwagi	YOB 2010
Remarks	29.2 m3/h
Remarks	with 1YC23AEXDA compressor
Stock	1



Description

Used Daikin RX20JV1B

Used, but in very good condition, air conditioner wall mounted split unit build by Daikin type RX20JV1B with a swing compressor type 1YC23AEXDA also build by Daikin. cooling capacity 2.6kW and heating capacity 3.5kW
 *Why choose for HOSBV? Were not only the largest used refrigeration specialist in Europe, but also, we deliver all equipment including an extensive test, warranty and industrial cleaning.
 *Optional we can also perform a new paint job and arrange the logistics.



2 Specifications

2-1 Nominal Capacity and Nominal Input			RX3L/V1B	RX2L/V1B	RX3S/V1B	
Indoor Units			FTX20L/V1B	FTX25L/V1B	FTX35L/V1B	
For combination indoor units + outdoor units	Cooling capacity	Minimum	KW	1.3		
			Btu/h	4,400		
			Kcal/h	1,120		
		Standard	KW	2.0	2.5	3.3
			Btu/h	6,800	8,500	11,200
			Kcal/h	1,720	2,150	2,840
	Maximum	KW	3.5	3.0	3.5	
		Btu/h	8,900	10,200	13,000	
		Kcal/h	2,240	2,580	3,270	
	Heating capacity	Minimum	KW	1.3		
			Btu/h	4,400		
			Kcal/h	1,120		
Standard		KW	2.5	2.8	3.5	
		Btu/h	8,500	9,600	11,900	
		Kcal/h	2,150	2,410	3,010	
Maximum		KW	3.5	4.0	4.8	
		Btu/h	11,600	13,600	16,400	
		Kcal/h	3,010	3,440	4,130	
Piping connections		Drain	mm	18.0		
		Gas	OD	9.52		
		Heat insulation		Both liquid and gas pipes		
	Liquid	OD	6.35			
	Gas	mm	6.35			
Power Input	Cooling	Nominal	KW	0.550	0.730	0.980
	Heating	Nominal	KW	0.950	0.690	0.930
For combination indoor units + outdoor units	EER	Nominal		3.54	3.42	3.27
	COP	Nominal		4.24	4.06	3.76
	Energy Label	Cooling		A		
	Heating		A			
	Annual energy consumption	kWh		275	365	490